



MANUAL

2008

unleash your potential

MONKEY MANUAL 2008

1. WARNING & SAFETY PRECAUTIONS

-READ THE FOLLOWING POINTS BEFORE ASSEMBLING YOUR KITE

WARNING:

- KITE FLYING CAN BE DANGEROUS.
- ALWAYS USE EXTREME CAUTION WHEN USING THIS PRODUCT.
- MISUSE OF THIS PRODUCT CAN CAUSE SERIOUS INJURY OR DEATH.
- ONLY USE THIS PRODUCT IF YOU ARE IN GOOD PHYSICAL HEALTH.
- NEVER ACT IN A CARELESS MANNER WHEN USING THIS PRODUCT (SUCH AS JUMPING IN THE AIR, OR TYING YOURSELF TO ANYTHING).
- YOU ARE RESPONSIBLE FOR YOUR OWN SAFETY, AND THE SAFETY OF OTHERS AROUND YOU WHEN USING THIS PRODUCT.

IMPORTANT SAFETY CONSIDERATIONS:

- YOUR KITE IS NOT A PERSONAL FLOATATION DEVICE. ALWAYS WEAR AN APPROVED PERSONAL FLOATATION DEVICE WHEN USING THIS PRODUCT NEAR THE WATER.
- ALWAYS LEARN TO USE A SMALL TWO-LINE STUNT KITE (ONE METER OR SMALLER) BEFORE ATTEMPTING TO USE THIS PRODUCT.
- TAKE LESSONS WITH A PROFESSIONAL, QUALIFIED INSTRUCTOR BEFORE USING THIS PRODUCT.
- NEVER ALLOW ANYONE WHO IS NOT FAMILIAR WITH TRACTION KITING TO USE THIS PRODUCT WITHOUT EXPERIENCED ASSISTANCE.
- NEVER USE THIS PRODUCT WITHOUT A LEASH SYSTEM. A LOOSE KITE IS EXTREMELY DANGEROUS TO EVERYONE DOWN WIND.
- THE LEASH SYSTEM IS NOT A PERMANENT ATTACHMENT TO THIS PRODUCT.
- ALWAYS WEAR A HELMET, GLOVES, SHOES, AND OTHER PROTECTIVE EQUIPMENT WHEN USING THIS PRODUCT.
- FAMILIARISE YOURSELF WITH THE SAFETY OPTIONS FOR THIS PRODUCT AND CHECK AND TEST THEM EVERY TIME YOU USE IT.

CHOOSE A SAFE LOCATION:

- ALWAYS OBSERVE LOCAL RULES AND REGULATIONS WHEN USING THIS PRODUCT.
- NEVER USE THIS PRODUCT NEAR BUILDINGS, STRUCTURES, POWER LINES, SKI LIFTS, TELEPHONE POLES, TREES, BUSHES, ROADS, AUTOMOBILES, OR AIRPORTS.
- ONLY USE THIS PRODUCT WHEN YOU HAVE AT LEAST 100 METERS OF CLEAR SPACE DOWNWIND, AND ON BOTH SIDES OF YOUR LAUNCHING POSITION. THE POWER OF THE KITE CAN PULL YOU DOWNWIND UNEXPECTEDLY AND WITH GREAT FORCE.
- DO NOT FLY YOUR KITE OVER OTHER PEOPLE OR ANIMALS. SPECTATORS SHOULD REMAIN BEHIND YOU WHEN USING THIS PRODUCT.
- NEVER USE THIS PRODUCT ON CROWDED BEACHES OR FIELDS.
- NEVER USE THIS PRODUCT NEAR THE WATER UNLESS YOU KNOW HOW TO SWIM AND ARE IN GOOD PHYSICAL HEALTH.
- PRACTICE, IN LIGHT WINDS, LAUNCHING AND LANDING PROCEDURES, AND SELF RESCUE TECHNIQUES BEFORE USING THIS PRODUCT NEAR THE WATER.

CHOOSE SAFE WEATHER CONDITIONS

- NEVER LEARN TO USE THIS PRODUCT IN MORE THAN 10 KNOTS OF WIND.
- NEVER USE THIS PRODUCT IN HIGH WINDS.
- NEVER USE THIS PRODUCT IN THE EVENT OF THUNDERSTORM OR LIGHTNING.

MONKEY MANUAL 2008

- ONLY USE THIS PRODUCT WHEN YOU CAN REMAIN IN A STANDING POSITION.
- NEVER USE THIS PRODUCT IN WIND CONDITIONS THAT ARE ABOVE YOUR ABILITY LEVEL.
- NEVER USE THIS PRODUCT NEAR THE WATER IN OFFSHORE WIND.

USE CAUTION WITH FLYING LINES

- NEVER TOUCH THE FLYING LINES WHEN THE KITE IS IN USE. FLYING LINES ARE EXTREMELY SHARP WHILE UNDER TENSION AND CAN CAUSE SERIOUS INJURY OR DEATH.
- NEVER USE THIS PRODUCT WITH WORN LINES. A LINE THAT BREAKS WHILE UNDER TENSION CAN CAUSE SERIOUS INJURY OR DEATH.
- ALWAYS CHECK YOUR FLYING LINES FOR KNOTS BEFORE EACH USE. KNOTS GREATLY REDUCE THE STRENGTH OF THE LINES.
- STAY AWAY FROM TANGLED FLYING LINES UNLESS THE KITE IS SECURED TO THE GROUND. AN UNSECURED KITE CAN SELF LAUNCH UNEXPECTEDLY, AND CAN CAUSE SERIOUS INJURY OR DEATH.
- NEVER ALLOW YOURSELF, OR ANYONE ELSE, TO GET BETWEEN THE CONTROL BAR AND THE KITE WHEN USING THIS PRODUCT.

SAFETY

- MONKEYKITES CONTROL BARS ARE EQUIPPED WITH SAFETY SYSTEMS. CAREFULLY REVIEW ALL ASPECTS OF THE INSTRUCTION MANUAL RELEVANT TO THE CONTROL-BAR AS SEEN IN THE MANUAL.
- IF YOU ALREADY HAVE A CONTROL-BAR IT'S ABSOLUTELY NECESSARY TO HAVE A SAFETY SYSTEM WHICH ALLOWS YOU TO RELEASE THE KITE IN ANY CONDITIONS SO AS TO DEPOWER COMPLETELY. IT'S IMPORTANT THAT THE LEASH THAT CONNECTS YOU TO THE KITE IS ABLE TO BE RELEASED IN CASE OF SERIOUS PROBLEMS.
- ALWAYS MAKE SURE THAT YOU KNOW HOW TO ACTIVATE AND USE THE SECURITY EQUIPMENT. ALWAYS CHECK AND MAKE SURE THAT THE SECURITY FUNCTIONS WORK PROPERLY BEFORE USING THE KITE.
- ALWAYS FOLLOW THE INSTRUCTIONS SET FORTH IN THE KITE MANUAL, INCLUDING THE MAINTENANCE INSTRUCTIONS.
- WIND-RANGE FIGURES ARE AN INDICATION , VARIABLES CAN MODIFY THEM. WIND RANGES ARE BASED ON REGULAR WIND, A 75 KG INTERMEDIATE RIDER , 25M LINES AND A FAST 140 X 36 CM BOARD . IF YOU CHANGE THESE VARIABLES THE WIND RANGE WILL BE CHANGED ACCORDINGLY, SHORTER LINES ALLOW YOU TO HOLD ON IN STRONGER WIND , A LARGER BOARD WILL PUSH YOUR LOWER WIND-RANGE UP. THE RIDERS' ABILITY WILL ALSO INFLUENCE THE WIND-RANGE.

2. RELEASE AND AGREEMENTS

RELEASE OF LIABILITY, CLAIM WAIVER AND ASSUMPTION OF RISK AGREEMENT

BY ASSEMBLING THIS PRODUCT, YOU ARE AGREEING TO:

- 1) BE BOUND TO THE TERMS SET FORTH BELOW;
AND
- 2) REQUIRE ANYONE USING THIS PRODUCT TO BE BOUND BY SUCH TERMS.

IF YOU ARE UNWILLING TO BE BOUND BY THESE TERMS, RETURN THIS PRODUCT (BEFORE USE) FOR A FULL REFUND.

MONKEY MANUAL 2008

ASSUMPTION OF RISK

USE OF THIS PRODUCT AND ANY OF ITS COMPONENTS INVOLVES CERTAIN INHERENT RISKS, DANGERS AND HAZARDS, WHICH CAN RESULT IN SERIOUS PERSONAL INJURY AND DEATH. IN USING THIS PRODUCT YOU FREELY AGREE TO ASSUME AND ACCEPT ANY AND ALL KNOWN AND UNKNOWN RISKS OF INJURY WHILE USING THIS EQUIPMENT. THE RISKS INHERENT IN THE SPORT CAN BE GREATLY REDUCED BY ABIDING BY THE WARNINGS AND GUIDELINES LISTED IN THIS USER'S GUIDE AND BY USING COMMON SENSE.

RELEASE AND WAIVER OF CLAIMS AGREEMENT

IN CONSIDERATION OF YOUR USE OF THIS PRODUCT, YOU HEREBY AGREE TO THE FOLLOWING, TO THE FULLEST EXTENT PERMITTED BY LAW:
TO WAIVE ANY AND ALL CLAIMS THAT YOU HAVE OR MAY IN THE FUTURE HAVE AGAINST TETIER PTY LTD , TRADING AS MONKEYKITES.COM, OR ANY OF ITS AGENTS, DISTRIBUTORS OR RETAILERS, RESULTING FROM USE OF THIS PRODUCT AND ANY OF ITS COMPONENTS TO TETIER PTY LTD, TRADING AS MONKEYKITES.COM, AND / OR ANY OF ITS AGENTS, DISTRIBUTORS OR RETAILERS FROM ANY AND ALL LIABILITY FOR ANY LOSS, DAMAGE, INJURY OR EXPENSE THAT YOU OR ANY USERS OF THIS PRODUCT MAY SUFFER, OR THAT YOUR NEXT OF KIN MAY SUFFER, AS A RESULT OF THE USE OF THIS PRODUCT, DUE TO ANY CAUSE WHATSOEVER, INCLUDING NEGLIGENCE OR BREACH OF CONTRACT ON THE PART OF TETIER PTY LTD , TRADING AS MONKEYKITES.COM, OR ANY OF ITS AGENTS, DISTRIBUTORS OR RETAILERS, IN THE DESIGN OR MANUFACTURE OF THIS PRODUCT.

ARBITRATION

IN FURTHER CONSIDERATION OF THE SALE TO YOU OF THIS PRODUCT AND ANY OF ITS COMPONENTS, YOU HEREBY AGREE TO SUBMIT TO BINDING ARBITRATION ANY AND ALL CLAIMS, WHICH YOU BELIEVE YOU MAY HAVE AGAINST TETIER PTY LTD, TRADING AS MONKEYKITES.COM, OR ANY OF ITS AGENTS, DISTRIBUTORS OR RETAILERS, ARISING FROM THE USE OF ANY OF THE MONKEYKITES.COM / TETIER PTY LTD. EQUIPMENT. THE ARBITRATION SHALL BE PURSUANT TO THE RULES OF THE AUSTRALIAN ARBITRATION ASSOCIATION.
ARBITRATION SHALL BE COMMENCED WITHIN ONE (1) YEAR FROM THE DATE ON WHICH ANY ALLEGED CLAIM FIRST AROSE. FURTHER, THE ARBITRATION SHALL BE HELD IN SYDNEY, AUSTRALIA UNLESS OTHERWISE MUTUALLY AGREED TO BY ALL PARTIES. THE SUBMISSION TO THE AUSTRALIAN ARBITRATION ASSOCIATION SHALL BE LIMITED AND THE ARBITRATION AWARD MAY BE ENFORCED BY ANY COURT OF COMPETENT JURISDICTION.

BINDING EFFECT OF AGREEMENT

IN THE EVENT OF YOUR DEATH OR INCAPACITY, THIS AGREEMENT SHALL BE EFFECTIVE AND BINDING UPON YOUR HEIRS, NEXT OF KIN, EXECUTORS, ADMINISTRATORS, ASSIGNS AND REPRESENTATIVES.

ENTIRE AGREEMENT

IN ENTERING INTO THIS AGREEMENT, YOU ARE NOT RELYING UPON ANY ORAL OR WRITTEN REPRESENTATIONS OTHER THAN WHAT IS SET FORTH IN THIS AGREEMENT AND MANUAL.

MONKEY MANUAL 2008

3. MONKEYKITES GRIFFIN 2008

PRODUCT DESCRIPTION

GRIFFIN KITES COME COMPLETE WITH KITE, BRIDLE, TRAVEL BAG AND REPAIR KIT. THE MANUAL AND HOW TO'S ON TUNING THE KITE CAN BE FOUND ONLINE @ WWW.MONKEYKITES.COM

2008 KITES COME IN FIVE SIZES, 7M, 9M, 12M, 15M, 18M - THEY ARE DESIGNED SO YOU NEED NO MORE THAN 2 KITES IN YOUR QUIVER TO COVER ANY CONDITIONS.

FEATURES OF THE GRIFFIN 2008

- LOW STRETCH, HIGH PERFORMANCE, DURABLE, LAMINATED, HYDROPHOBIC, SAND SHEDDING CANOPY CLOTH.
- STRONG, THICK STITCHING - TRIPLE STITCH REINFORCEMENT
- BOMB PROOF CONSTRUCTION INCLUDING DOUBLE REINFORCED LEADING EDGE AND STRUTS
- ANTI TANGLE DETAILING AT STRUT TIPS
- SCUFF GUARDS ON ALL JOINS ALONG THE LEADING EDGE AND STRUT TIPS
- BAR IS OPTIMISED FOR 1: 1 USE TO DELIVER DIRECT FEEL TO THE USER.
- SUPER STABLE EVEN IN GUSTS
- BRIDLE IS COLOUR CODED FOR EASY RIDER ORIENTATION.
- ADJUSTABLE BRIDLE LOCATION TO ALLOW RIDERS TO 'TUNE' KITE TO THEIR PREFERRED RIDING STYLE.
- THE PIGTAILS ON THE KITE ARE COLOUR CODED TO THE BRIDLE AND THE FLYING LINES FOR QUICK, EASY AND SAFE SET UP (NO MISTAKES).
- KOOK PROOF LINE CONNECTORS.
- 2008 GRIFFIN GRAPHICS
- NEW COURIER STYLE BAG FOLDS OUT TO ACCOMMODATE INFLATED STRUTS.
- ROUNDED STRUT TO LEADING EDGE JOINS MINIMISE BLADDER PINCH - LESS BLOW OUTS.
- NEW TRIPLE REINFORCED VALVES ON BLADDERS - NO LEAKING!
- EXTRA LONG VELCRO TABS OVER VALVES - NO LEAKING!
- HEAVY DUTY SAMSON AMSTEEL DYNEEMA USED ON HIGH WEAR SECTIONS OF BRIDLES WHICH CAN BE EASILY REPLACED WHEN NEEDED.
- HIGH QUALITY RONSTAN HARDWARE ON BRIDLE AND BAR
- CAN ADJUST KITE TO TURN SLOW, MEDIUM OR FAST
- ONLINE PDF DOWNLOADABLE MANUAL AND MONKEY USER FORUM FOR HELP!

KITE RANGES

2008 MONKEYKITES GRIFFINS ARE SUITABLE FORRIDERS OF ALL SKILL LEVELS. KITE RANGE DEPENDS HEAVILY ON A COMBINATION OF FACTORS; THE RIDER'S SKILL LEVEL, THE BOARD SIZE AND THE WIND AND WATER CONDITIONS. THE TABLE BELOW IS INDICATIVE ONLY AND IS ESTIMATED FOR AN INTERMEDIATE RIDER ON A MEDIUM SIZED TWIN TIP BOARD.

SIZE	65KG	75KG	85KG	100KG
7M	14 - 25	16 - 30	18 - 35	20 - 35
9M	12 - 23	14 - 28	15 - 30	16 - 32
12M	10 - 20	11 - 25	13 - 28	15 - 30
15M	8 - 18	8 - 18	10 - 20	12 - 25
18M	NO	NO	8 - 18	10 - 20

TABLE 1: WIND RANGE IS IN KNOTS, KITE SIZE IN METRES AND RIDER WEIGHT IN KILOGRAMS

MONKEY MANUAL 2008

DESIGN & DESIGN PHILOSOPHY

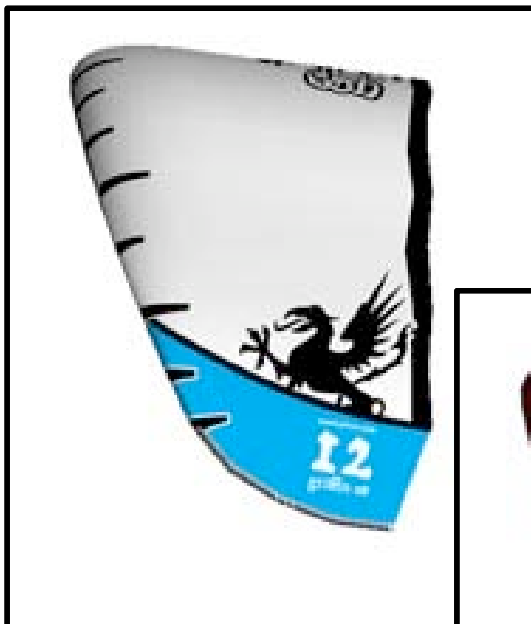
THE MONKEYKITES GRIFFIN RANGE IS DESIGNED, DEVELOPED, TESTED AND DISTRIBUTED BY A GLOBAL TEAM OF EXPERIENCED DESIGNERS AND KITERS WHO HAVE BEEN INVOLVED IN KITE DESIGN, TESTING AND MANUFACTURE SINCE THE CONCEPTION OF THE SPORT. WE AIM TO DESIGN AFFORDABLE, HIGHLY FUNCTIONAL PRODUCT TO SUIT ALL RIDER ABILITIES.

QUALITY AND SUSTAINABILITY

WE PRIDE OURSELVES IN THE QUALITY OF ALL MONKEY PRODUCTS. ALL OUR PRODUCTS ARE PRODUCED WITHIN THE BOUNDARIES OF THE QUALITY STANDARD ISO 9000. OUR SAFETY FEATURES ARE TESTED AND APPROVED ACCORDING TO THE FRENCH EN STANDARD FOR KITESURFING EQUIPMENT.

AS PART OF OUR QUALITY CONTROL PROCEDURE WE HAVE INTRODUCED **MONKEY DNA** - A UNIQUE SERIAL NUMBER FOR EACH PRODUCT TO ENFORCE QUALITY CONTROL. THESE UNIQUE IDENTIFIERS HAVE PROVEN USEFUL IN LOST KITE IDENTIFICATION AND RETURN AND ALSO THEFT DETECTION / PREVENTION.

WE DESIGN OUR KITES TO USE THE MINIMUM MATERIALS AND ENERGY INPUTS IN CONSTRUCTION AND ALSO IN DISTRIBUTION. WE ALSO DESIGN THEM FOR LONGEVITY AND EASY REPAIR.



THE KITE

JUST A FEW OF THE FEATURES OF THE 2008 MONKEYKITES GRIFFIN

LOW STRETCH, HIGH PERFORMANCE, DURABLE, LAMINATED, HYDROPHOBIC, SAND SHEDDING CANOPY CLOTH

ADJUSTABLE BRIDLE LOCATION TO ALLOW RIDERS TO 'TUNE' KITE TO THEIR PREFERRED RIDING STYLE

SCUFF GUARDS ON ALL JOINS ALONG THE LEADING EDGE AND STRUT TIPS

STRONG, THICK STITCHING - TRIPLE STITCH REINFORCEMENT

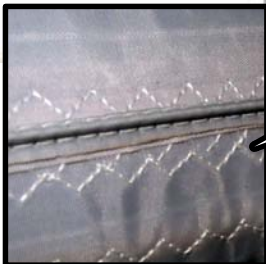
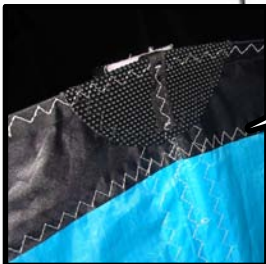
DOUBLE REINFORCED SEAMS ON THE LEADING EDGE.

ANTI TANGLE DETAILING AT STRUT TIPS

TRIPLE REINFORCED VALVES AND EXTRA LONG VELCRO TABS OVER VALVES - NO LEAKING!

MONKEY DNA - UNIQUE SERIAL NUMBER FOR QUALITY CONTROL AND KITE SECURITY

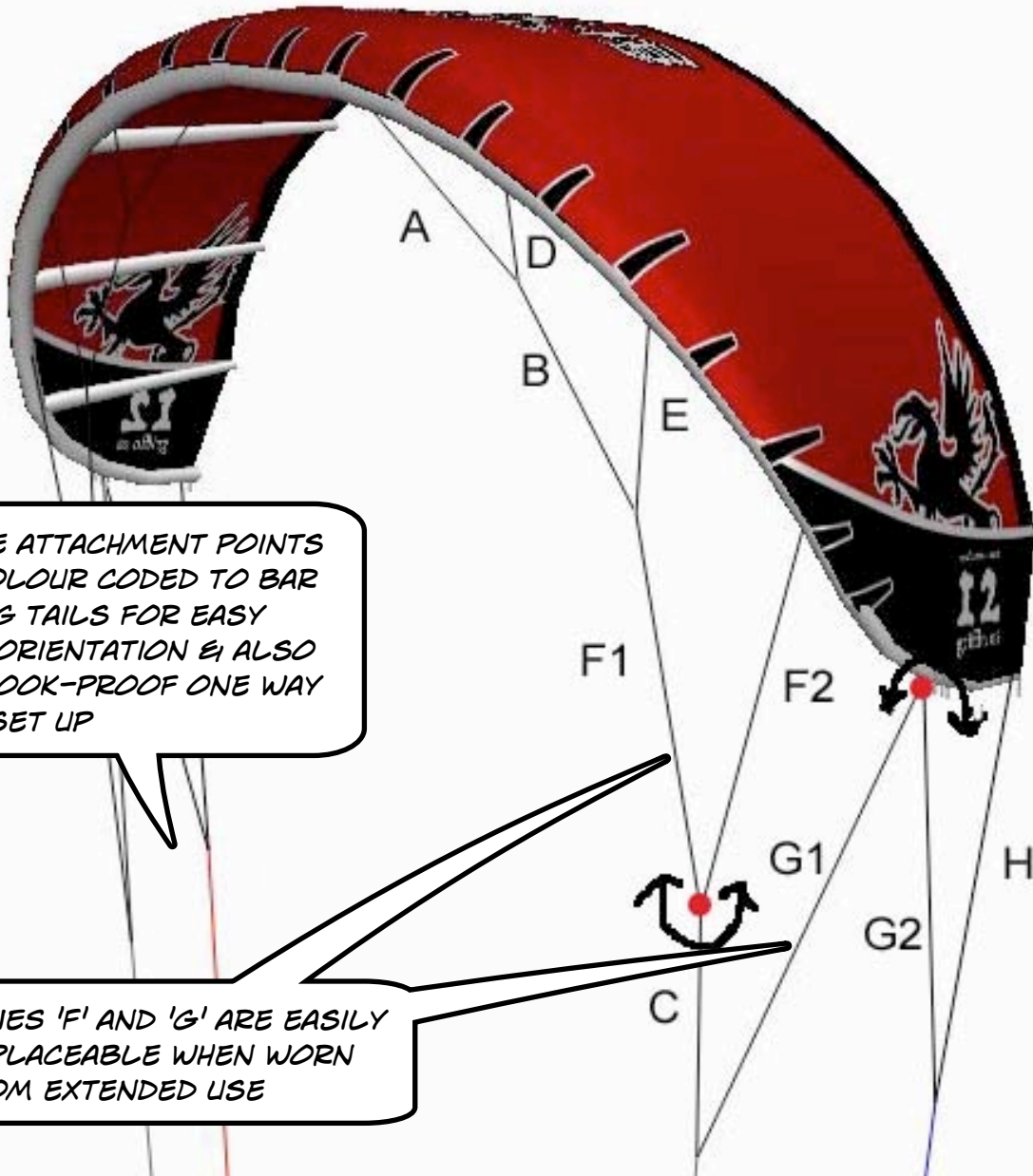
NEW COURIER STYLE BAG FOLDS OUT TO FIT INFLATED STRUTS



THE BRIDLE

OUR BRIDLES ARE MADE ULTRA LOW STRETCH LINE AND HAVE EASILY REPLACEABLE LENGTHS WHERE PULLEYS MAY WEAR THEM OUT.

IN THIS DIAGRAM SECTION MEASUREMENTS (IN MM) ARE TAKEN FROM THE LEADING EDGE TO THE END OF THE LINE. IT MAY, AS A RESULT, INCLUDE THE PIGTAILS.



BRIDLE ATTACHMENT POINTS ARE COLOUR CODED TO BAR AND PIG TAILS FOR EASY RIDER ORIENTATION & ALSO HAVE KOOK-PROOF ONE WAY ONLY SET UP

LINES 'F' AND 'G' ARE EASILY REPLACEABLE WHEN WORN FROM EXTENDED USE

KITE SIZE	A	B	C	D	E	F1	F2	G1	G2	H
5	598	616	728	247	496	1062	1112	1446	1368	1225
7	730	670	845	308	630	1133	1345	1716	1646	1471
9	760	837	942	318	670	1395	1441	1881	1798	1618
12	828	950	1129	348	753	1658	1674	2205	2069	1884
14	950	1046	1176	396	836	1743	1799	2358	2207	2011
15	919	1054	1246	384	830	1834	1849	2441	2297	2082
18	1067	1176	1324	446	941	1960	2023	2644	2527	2272

KOOK PROOF SETUP

SO .. HOW DO YOU KNOW YOU HAVE SET UP THE KITE THE RIGHT WAY? ... WE TRY TO GIVE YOU A HAND BY USING COLOUR CODED LINES AND ONE WAY CONNECTIONS SO YOU JUST CAN'T GET IT WRONG. IF YOU ARE NOT USING A MONKEYBAR WITH YOUR MONKEYGRIFFIN THEN YOU MAY NEED TO CAREFULLY REVIEW YOUR SET UP TO MAKE SURE IT IS CORRECT AND SAFE. ALWAYS CHECK IT IS CORRECT BEFORE LAUNCHING.

INFLATING THE KITE



1. UNROLL THE KITE. SECURE WITH SAND ON WING TIP

2. INFLATE THE STRUTS FIRST TO 6-7 PSI.



3. THEN, HOLDING BY THE BRIDLE, INFLATE LEADING EDGE.



4. FLIP KITE, FACE INTO THE WIND, & SECURE WITH SAND AT CENTRE

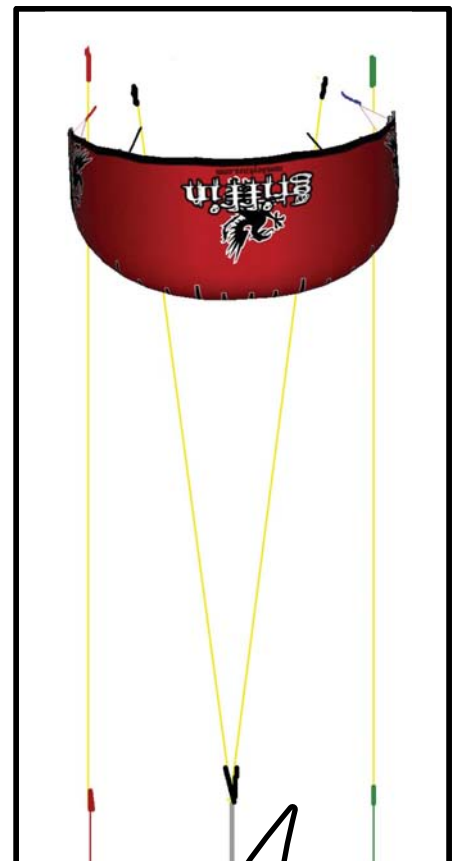
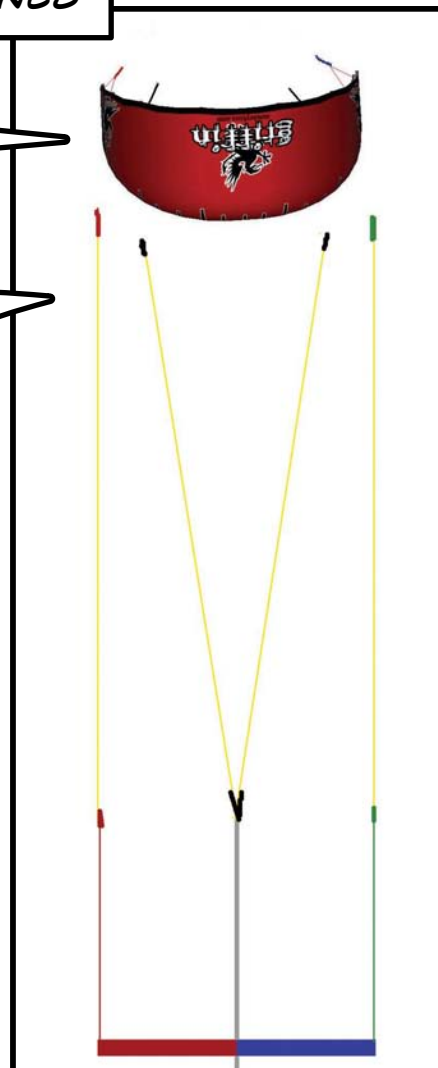
ATTACHING BAR AND LINES

PLACE KITE WITH LEADING EDGE DOWN AND FACING INTO THE WIND. SECURE.

WALK INTO THE WIND 30 OR SO PACES, UNWINDING YOUR LINES FROM YOUR BAR AS YOU WALK. PLACE BAR RIGHT WAY UP ON THE GROUND AND WALK THE LINES OUT BACK TO THE KITE SO THEY LOOK LIKE THIS



YOU CAN ONLY JOIN THE LINES ONE WAY AS WE USE KOOK PROOF, COLOUR CODED LINES.



LAY KITE OVER LINES AND ATTACH CORRESPONDING LINES AS SHOWN IN THIS DIAGRAM. STEERING LINES TO THE RED AND GREEN, & CENTRE LINES TO THE BLACK

THE BAR

BARS AND LINES

ALL 2008 MONKEYKITES.COM GRIFFINS ARE DESIGNED TO FLY ON 53 CM BARS WITH 25M LINES AS A DEFAULT. SOME PEOPLE PREFER TO FLY SMALLER KITES ON SMALLER BARS AND LARGER KITES ON LARGER BARS.

BARS COME IN SMALL 45CM, MEDIUM 53CM OR LARGE 60CM THEY INCLUDE THE CHICKEN LOOP AND DEPOWER SYSTEM.

WE WOULD SUGGEST IF YOU WISH TO VARY THE BAR SIZE THAT THE 7 AND 9M FLY ON THE 45CM BAR, THE 12,15 FLY ON 53CM BAR AND THE 18 FLY ON THE 60CM BAR.

THE GRIFFIN BAR COMES WITH EITHER A PIN RELEASE OR A VELCRO RELEASE DESIGNED AND TESTED TO COMPLY TO THE FRENCH STANDARD. ONLY THE VELCRO SYSTEM WILL BE AVAILABLE IN FRANCE. THEY CAN BE USED WITH OR WITHOUT A SWIVEL SYSTEM - WHICH WE RECOMMEND FOR OPTIMAL PERFORMANCE.

FLYING LINES COME STANDARD AT 25M OR YOU CAN PURCHASE 20M LINES WITH 5M EXTENSIONS.

VELCRO RELEASE SYSTEM



PULL DOWN ON HANDLE TO RELEASE

PIN RELEASE SYSTEM



REMOVABLE DONKEY DICK

PULL DOWN ON HANDLE TO RELEASE

THE BAR

SAFETY LEASH CAN BE ATTACHED TO 'OH SHIT!!' HANDLES, OR THE RING ON THE CENTRE LINE

KOOK-PROOF COLOUR CODED LEADER LINES AND SHEAVES THICK AND STRONG FOR LONGER LIFE

'OH SHIT!!' HANDLES FOR WHEN ALL ELSE FAILS ...

FLOATERS FOR EASY BAR RETRIEVAL

SOFT BAR ENDS CUSHION HANDS FROM HANDLE-PASS IMPACT

WIDE ANGLED FERRULE FOR LONGER LINE LIFE AND LESS BAR FRICTION

ORIGINAL 'CLAM CLEATS' FOR MAXIMUM PERFORMANCE IN ICY OR TROPICAL CONDITIONS

REMOVABLE MONKEY STICK

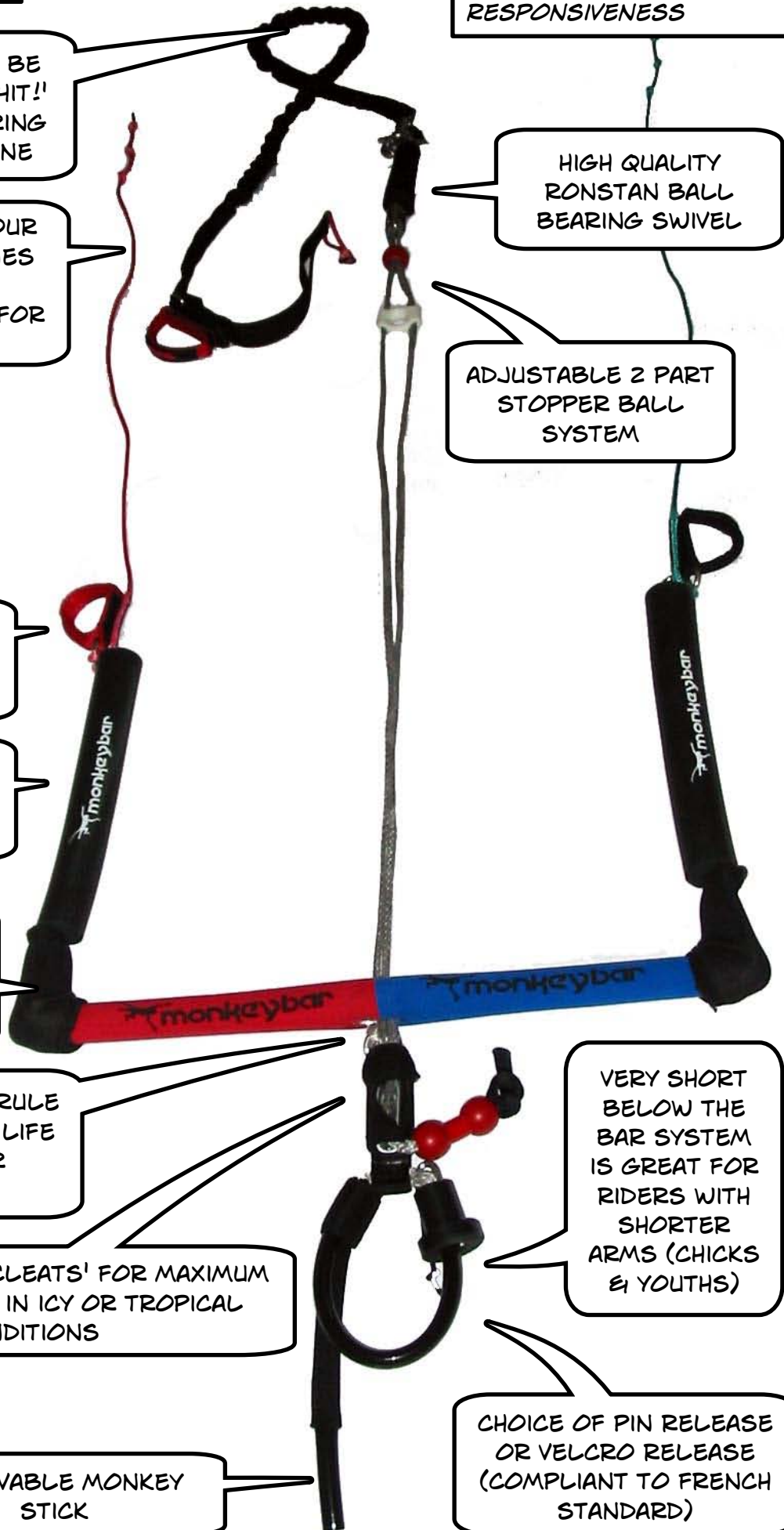
PERFECT BAR PRESSURE DELIVERS FEEL AND RESPONSIVENESS

HIGH QUALITY RONSTAN BALL BEARING SWIVEL

ADJUSTABLE 2 PART STOPPER BALL SYSTEM

VERY SHORT BELOW THE BAR SYSTEM IS GREAT FOR RIDERS WITH SHORTER ARMS (CHICKS & YOUTHS)

CHOICE OF PIN RELEASE OR VELCRO RELEASE (COMPLIANT TO FRENCH STANDARD)

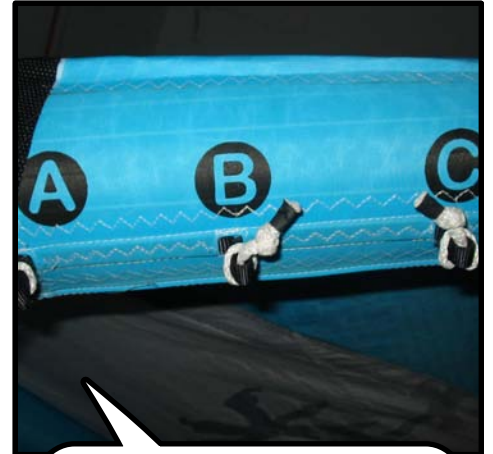
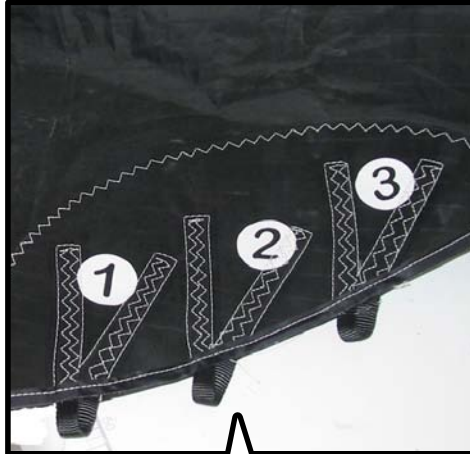


TUNING YOUR GRIFFIN

EVERY KITER WE MEET IS AN EXPERT ON KITE DESIGN ... FOR THEM ! BASICALLY YOU ALL LIKE A DIFFERENT FEEL. IN ORDER TO ALLOW YOU TO OPTIMISE YOUR KITE TO RIDE JUST HOW YOU LIKE IT WE'VE DEVELOPED A NUMBER OF TUNING POSSIBILITIES AT THE KITE, THE BAR AND IN THE BRIDLE

TUNING AT THE KITE

YOUR KITE WILL COME SET ON THE DEFAULT SETTINGS



FINE TUNING THE FEEL
FAST: LIGHTER BAR PRESSURE, MORE BAR TRAVEL, FASTER TURNING, LESS PULL FOR TURNING

DEFAULT:

RECOMMENDED

SLOW: MORE BAR PRESSURE, LESS BAR TRAVEL, SLOWER TURNING, MORE PULL NEEDED FOR TURNING

FINE TUNING THE SPEED

- 1 FASTEST TURNING
- 2 NORMAL TURNING - **RECOMMENDED SETTING**
- 3 SLOWER TURNING

ADJUST TO YOUR PREFERENCE AS A RIDER

A. RECOMMENDED - BEST ALL ROUND WIND RANGE, DE-POWER, POWER ON DEMAND, BEST BAR ON / OFF FELLING, GOOD TOP END. RESPONSIVE, IDEAL FOR SURF STYLE.

B. GOOD FOR FREESTYLE AND WAVE MIX. NOT AS MUCH DE-POWER AS C.

C. GRUNTY CONSTANT PULL, VERY LITTLE DEPOWER, LESS BAR PRESSURE.

WE RECOMMEND THE DEFAULT SETTINGS ON THE KITE. HOWEVER YOU MAY PREFER A DIFFERENT FEEL OR PERFORMANCE. THIS CAN BE ACHIEVED BY TUNING THE KITE AS ABOVE. WHENEVER YOU TUNE YOUR KITE IT WILL NEED TO BE TESTED TO MAKE SURE YOU CAN ANTICIPATE HOW IT WILL REACT IN FULL USE

EXPERIMENT WITH THE DIFFERENT SETTINGS TO DETERMINE WHAT SUITS YOUR RIDING STYLE AND THE CONDITIONS YOU ARE RIDING IN

DO THESE EXPERIMENTS IN GOOD STRABLE WEATHER AND KEEP A LOG BOOK SO YOU CAN MAKE FAIR COMPARISONS OF DIFFERENT COMBINATIONS



CARING FOR YOUR GRIFFIN

IF YOU LOOK AFTER YOUR GEAR IT WILL LAST LONGER SO TAKE THE TIME TO DUST OFF ALL THE SAND AND DIRT AND DRY OFF YOUR GEAR BEFORE PACKING IT OR STORING IT.

NEVER LEAVE YOUR GEAR IN THE CAR, EXPOSED TO THE SUN, OR WET.

PACKING UP THE KITE



1. DEFLATE THEN REMOVE TOOL



2. LIE FLAT AND DUST OFF



3. ROLL FROM TIPS TO CENTRE



4. FOLD AND PUT IN YOUR BAG

PACKING UP THE BAR



1. DEPOWER FULLY



2. BRING LINES TOGETHER AND WRAP AROUND HANDLES IN A FIGURE 8



3. LEAVE ABOUT 40CM TO WIND AROUND BAR



4. WIND THEN SECURE WITH END ELASTIC

FIXING WORN BRIDLES SECTIONS

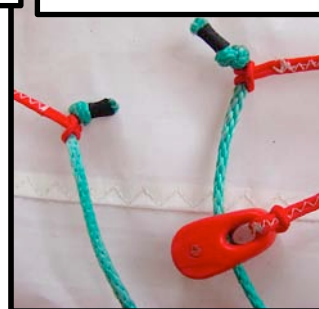
REPLACE ANY LINES OR PULLEYS AS SOON AS THEY SHOW ANY WEAR



1. MEASURE FIXING LINE TO ENSURE MATCH WITH OTHER SIDE



2. THREAD LINE THROUGH PULLEY AND TIE A KNOT AT EACH END



3. ON EACH SIDE OF PULLEY LOOP AND TIGHTEN THE LARKSHEADS



4. TEST BEFORE RIDING THAT THE LINE HOLDS & IS THE RIGHT SIZE

RELAUNCHING

IF YOU HAVE NOT FLOWN THIS STYLE OF KITE BEFORE OR IF YOU DO NOT KNOW HOW TO LAUNCH OR LAND YOUR KITE PLEASE MAKE SURE YOU TAKE LESSONS WITH A QUALIFIED INSTRUCTOR BEFORE USING THIS PRODUCT.

THESE RELAUNCHING INSTRUCTIONS DESCRIBE HOW TO LAUNCH A KITE LANDED LEADING EDGE DOWN EITHER IN THE WATER OR ON SNOW.

IT IS A GOOD IDEA TO PRACTICE THIS IN SAFE OR CONTROLLED CONDITIONS SO YOU KNOW HOW TO DO IT WHEN THE NEED ARISES.

IF YOUR KITE IS LYING WITH THE LEADING EDGE DOWN THEN YOU CAN RELAUNCH IT USING THESE DIRECTIONS

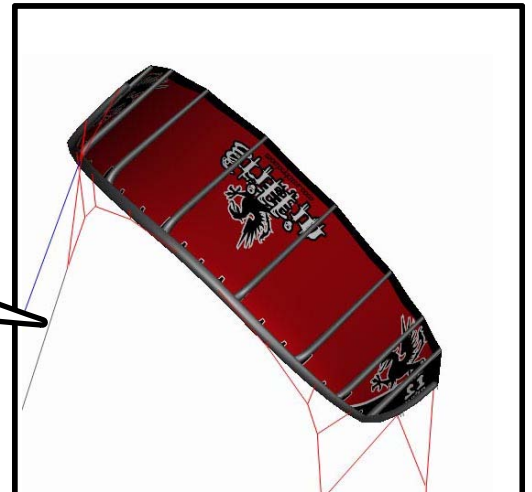
STEP 1:
DE-POWER BY PUSHING YOUR BAR TOWARDS THE KITE



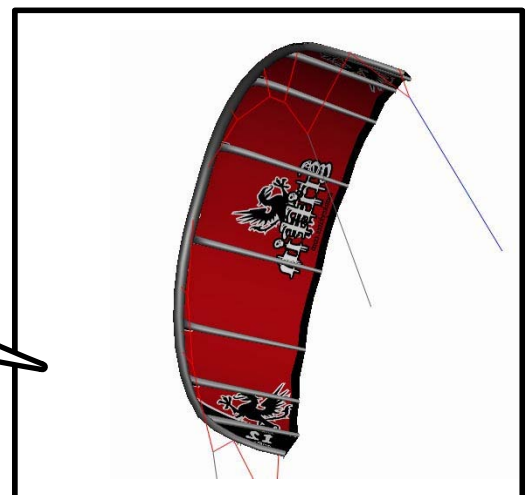
STEP 2:
DECIDE WHICH DIRECTION YOU WANT TO LAUNCH THE KITE, THEN EITHER TURN THE BAR HARD ON THAT SIDE, OR PULL THE STEERING LINE ATTACHED TO THE END OF THE BAR ON THAT SIDE TOWARDS YOU



STEP 3:
WHEN READY TO LAUNCH POWER UP THE KITE BY PULLING THE BAR TOWARDS YOU



STEP 4:
THE KITE WILL BEGIN TO LIFT ON THE SIDE YOU PULL.



KITE CARE

TO ENSURE YOU GET THE MOST OUT OF YOUR KITE WE SUGGEST THE FOLLOWING:

1. ON FIRST INFLATION SLOWLY INFLATE THE KITE, STRUTS FIRST AND THEN THE LEADING EDGE, TO MAKE SURE NONE OF THE BLADDERS HAVE MOVED OR TWISTED IN SHIPMENT.
2. NEVER PUT A WET KITE AWAY - DRY IT OUT, IF NOT AT THE BEACH, THEN AT HOME BEFORE STORING.
3. BRUSH OFF ANY SAND, DIRT OR OTHER MATERIAL STUCK TO THE KITE.
4. DO NOT BUNDLE YOUR BAR UP WITH THE KITE. MAKE SURE YOU DETACH THE LINES AND BAR AND PACK SEPARATELY TO THE KITE.
5. DO NOT LEAVE EXPOSED IN THE SUN.
6. DO NOT LEAVE DEFLATION TOOLS IN VALVES.
7. GET LESSONS AND DON'T LET ANYONE ELSE USE YOUR GEAR.
8. CHECK KITE BEFORE EACH SESSION. FIX / REPLACE ANY WORN OR DAMAGED PARTS SUCH AS PULLEYS, LINES, CANOPY, BLADDERS ETC.

WARRANTY

MONKEYKITES OFFER A 6 MONTH WARRANTY AGAINST ALL MATERIALS AND WORKMANSHIP IN OUR PRODUCTS.

ALL WARRANTY CLAIMS ARE TO BE MADE THROUGH YOUR VENDOR.

MONKEYKITES RESERVES THE RIGHT TO REPAIR, REPLACE, REFUSE OR REFUND ON ANY WARRANTY CLAIM.

WARRANTY CLAIMS WILL NOT BE CONSIDERED UNLESS PROOF OF PURCHASE IS TENDERED.

PLEASE REGISTER YOUR MONKEYKITE AT WWW.MONKEYKITES.COM WITH IT'S UNIQUE MONKEY DNA SERIAL NUMBER WHICH MAY BE FOUND ON THE WING TIP.

PERSONALISE YOUR GRIFFIN

WANT TO STAND OUT FROM THE REST OF THE PUNTERS? THINK YOU CAN DO A BETTER JOB THAN OUR GRAPHIC ARTIST? WHY NOT DESIGN YOUR OWN KITE GRAPHIC AND GET IT MADE BY US.

REPAIRING BLADDERS

IN THE POCKET OF YOUR BAG IS A REPAIR KIT FOR SMALL PUNCTURES. IF YOU DO NOT WANT TO REPAIR YOUR OWN BLADDERS, YOUR LOCAL SHOP CAN DO IT FOR YOU. SOMETIMES YOU MAY NEED TO REPLACE BLADDERS. MONKEYKITES CAN SUPPLY REPLACEMENT BLADDERS FOR YOU. ASK YOUR DEALER IF THEY HAVE ANY IN STOCK OR IF THEY CAN ORDER THEM IN FOR YOU.